

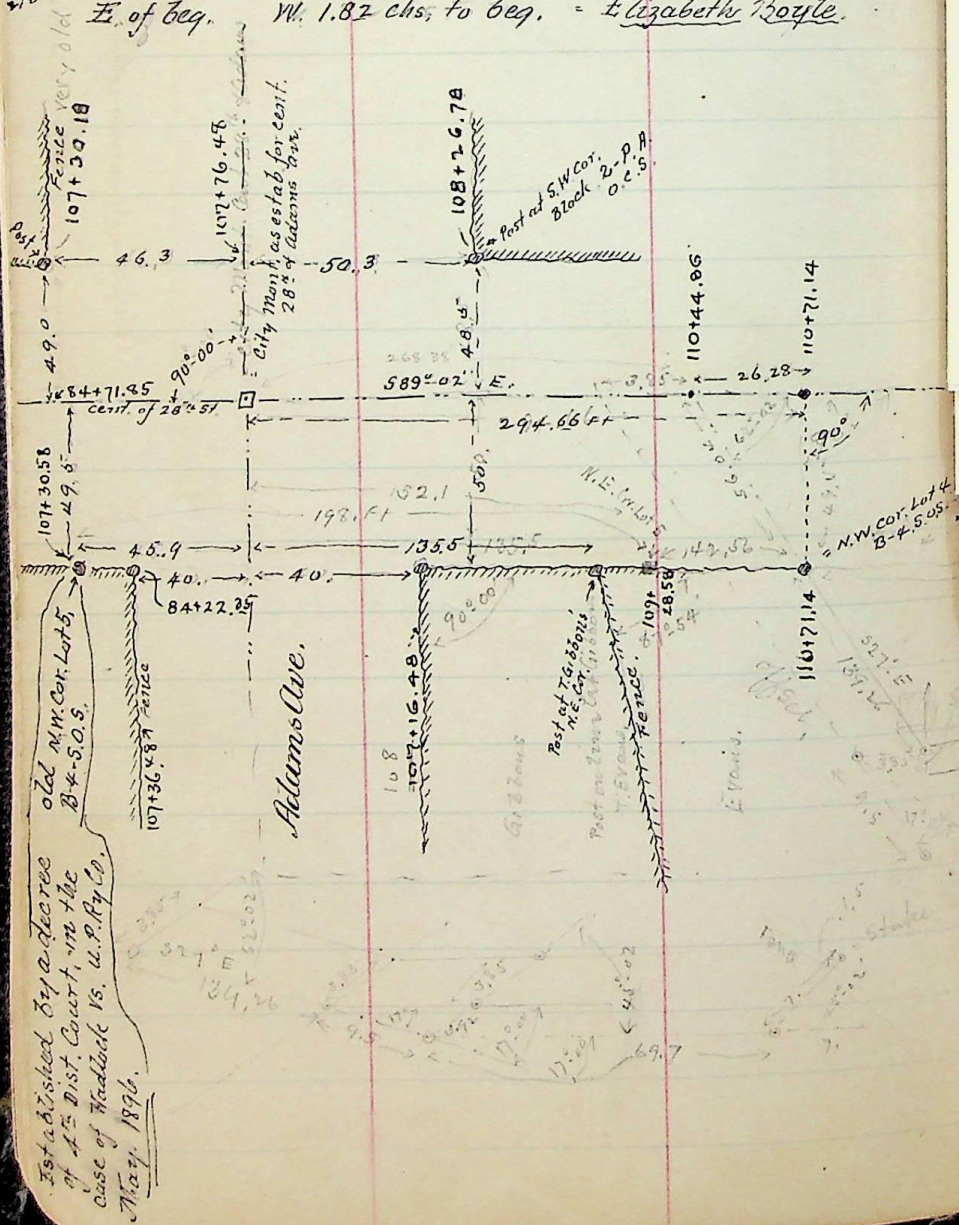
See page 76-77  
see also Field Book  
D. page 62

Survey of part of

Sept. 14<sup>th</sup> 1896.

Pt. Lot 4, B-4, S.O.S. - Beg. N.W. Cor. Lot 4; S. 27° 08' E.

2.11 chs. S 44° E. 120 chs. N. 2.88 chs. to point 1.82 chs. E. of beg. W. 1.82 chs. to beg. - Elizabeth Boyle.



Not established by a decree of the Dist. Court in the case of Redback vs. W.P. Ry. Co. May 27, 1896.

Nov. 25, - 1896. Description of W.A. Taylor's School land - Pt. Sec. 36. T. 7. N. - R. 2. W. - Beg. 871. Ft. S 0° 09' E. along Sec. line and 78.5 ft. E. along S. side of alley, from N.W. cor. of Sec. thence S 0° 28' W. 1326.1 ft. along fence - 7189° 37' E. 636.6 ft. along fence, 70° 28' E. 1321.2 ft. along fence to S. side of alley W. 636.6 ft. along S. side of alley to beg. 19.35 a. also beg. S.W. cor. of Sec. 36. - 70° 09' W. 462. ft. along W. side Sec. S 69° 44' E. 241.8 ft. - 572° 33' E. 129.5 ft. S 84° 54' E. 108.6 ft. - 340° 54' E. 141.2 ft. S 5° 11' W. 227.4 ft. to intersect S. line Sec. 789° 33' W. 529.5 ft. along S. side Sec. to beg. 4.33 a. In all 23.93 a. mailed Dec. 7, 1896.

Description of Jos Chugg's land in Sec. 36. T. 7. N. - R. 2. W. Beg. at S.W. cor. S. E 1/4 Sec. 36. - N 89° 33' W. 434.6 ft. along Sec. line N 6° 43' W. 360.3 ft. N 80° 10' W. 217.2 on N. side of alley, N 51° 35' E. 100. ft. on N. side of alley, N 38° 37' E. 531.7 on N. side alley to pt. 50. Ft. W. at R.A. from cent. C.P. Ry. S 18° 28' E. 928.3 ft. par. to Ry. + 9.3. on Sec. N 84° 25' W. 442.4 along S. line S. E 1/4 to beg. 10.51 a.

also beg. at pt. N 30° 52' W. 254.8. Ft. from S.E. cor. S. W 1/4 36. N 0° 50' E. 2289.8 Ft. to S. side alley. E 220.7 to pt. 50. ft. W. at R.A. from cent. C.P. Ry. S 18° 28' E. 332.6 par. to Ry. S 80° 45' W. 1877.4 Ft. S 73° 52' W. 348.4 ft. on N. side alley to beg. 16.66 a. all 27.17 a. more or less

Des. Jacob Thomas, claim. Sec. 36. T. 7. N. - R. 2. W. - Beg. on N. line Sec. 36 177. Ft. S 89° 52' E. from N.W. cor. N. E 1/4 of Sec. 589° 52' E. 372.6 Ft. on Sec. line S 7° 42' 882.8 Ft. N 78° 42' 308. Ft. S 74° 2' E. 1161.5 Ft. N 84° 59' E. 295.1 Ft. N 72° 42' W. 1308.7 Ft. N 89° 23' E. 437.9 to pt. 32.7 Ft. W. at R.A. from cent. 11471. S 26° 12' E. 1683.4 Ft. par. to R.R. S 85° 04' W. 2963.8 Ft. to point 50 ft. S. at R.A. from cent. C.P. Ry. N 18° 28' W. 734.5 ft. par. to Ry. N 84° 59' E. 1175.9 Ft. N 82° 14' W. 1630.3 ft. to beg. 75.25 a. also Beg. N.E. cor. of Sec. S 0° 33' W. 2136.3 ft. on Sec. line S 85° 04' W. 117.5 Ft. to pt. 32.7 ft. E. at R.A. from cent. 11471. N. 726° 12' W. 2395.2 par. to Ry. to intersect N. line Sec. 589° 52' E. 1195. Ft. on Sec. line to beg. 32.31 a. In all 107.51 a. School land. Mailed to Comm. at S.L. City Nov. 30 - 1896.